

NH fuse switch-disconnector size 000, 125 A, panel mounting (33 217)



Description

Article

Part No.: 33 217

QUADRON® Panel

NH fuse switch-disconnector size 000, 125 A, panel mounting
connection box terminal

System

Mounting plate

Product group 09

Subgroup 01

pack size 1

EAN 4021267332174

Advantages of the product

Self-closing inspection holes are available in the cover.

Catalog page 2015 : 6/19

eCl@ss 6.1 27142108
eCl@ss 7.1 27142108
ETIM 4.0 EC001040
ETIM 5.0 EC001040

Approvals

Standards

IEC 60947-1:2007 + A1:2010 + A2:2014
IEC 60947-3:2008 + A1:2012

Approvals

IEC (CB), Germanischer Lloyd, CCC



Type number: LTS-000

CCC certificate: 2004010302117260

Product data

Electrical data

Rated current (IEC): 125 A
Rated voltage (IEC) AC: 690 V
Rated voltage (IEC) DC: 440 V

Utilisation category AC (IEC 60947-3) :	AC-23B (400 V)
	AC-22B (500 V)
	AC-21B (690 V)
Utilisation category DC (IEC 60947-3) :	DC specifications: 2 current paths (L1,L3) in series
	DC-22B (440V/63A)
	DC-22B (220V/100A)
	DC-21B (440V/80A)
	DC-21B (220V/125A)

Power dissipation:

The power dissipation at a typical load of 80% of the rated current results to 3.2 W.
(The power dissipation for operation with rated current would be 5 W.)

Rated surge voltage U_{imp} : 6 kV
max. permitted voltage (IEC) AC: 800 V
max. permitted voltage (IEC) DC: 800 V

cond. rated short-circuit current with fuses: 50 kA / 690 V
approved with fuse links of characteristics: gG

for fuse links IEC 60269-2-1 (I) / DIN VDE 0636-201 size 000 (max. 21mm wide) up to 9W power dissipation

In accordance with the specified AC and DC switching properties and in consideration of the overload conditions, certain distances to earthed metal parts are to be adhered to. detailed information upon inquiry

When several devices are used side-by-side in continuous operation, the rated load factor specified in IEC / EN 61439-1, Table 1, must be observed.

Degree of protection IP30 at front, degree of protection near terminal depends on installation

Mechanical data

W x H x D: 89 x 143 x 75
Weight: 57.2 kg/100
Poles: 3-pole

front degree of protection: IP30

Terminal points

Box terminal:

2,5 - 50mm² flexible cables,

1,5 - 50mm² flexible cables with wire-end ferrules

1,5 - 10mm² solid round

16 - 50mm² stranded round

(flexible cables of maximum cross-section may not fit when using wire-end ferrule)

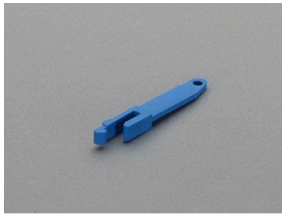
la. Cu. 6-9 mm wide

Terminal space 10mm x 10mm

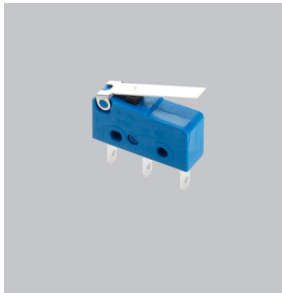
Material properties

Main body:	temperature stability 125°C, self-extinguishing in acc. to UL 94, creepage resistance CTI 200, halogen-free
Shock protection cover:	temperature stability 125°C, self-extinguishing in acc. to UL 94, creepage resistance CTI 200
Handle:	temperature stability 125°C, self-extinguishing in acc. to UL 94, creepage resistance CTI 200
Contacts:	spring-loaded copper contacts, silver plated

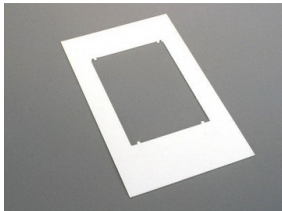
Accessories



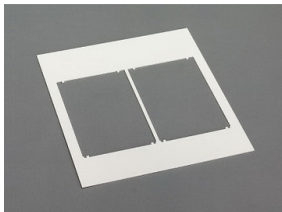
33 051
lid interlock
for sealing wire
Size 000



33 156
pilot switch for lid position
pilot switch: 250V AC / 5A; 30V DC / 4A
Size 000, 00, 2, 3



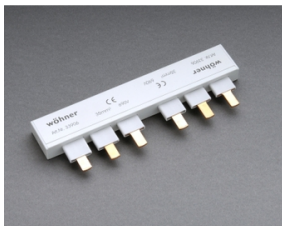
33 219
Trim frame, single
130 x 210
size 000



33 220
Trim frame, double
200 x 210
size 000



33 247
rapid mounting set
for 1 DIN rail
size 000



33 906
comb type busbar, 3-pole, for 2 NH fuse switch disconnectors
size 000, 33217
35mm²



33 907

connecting terminal, front connection

for NH-fuse switch disconnecter and comb type busbar

4 - 35 mm²